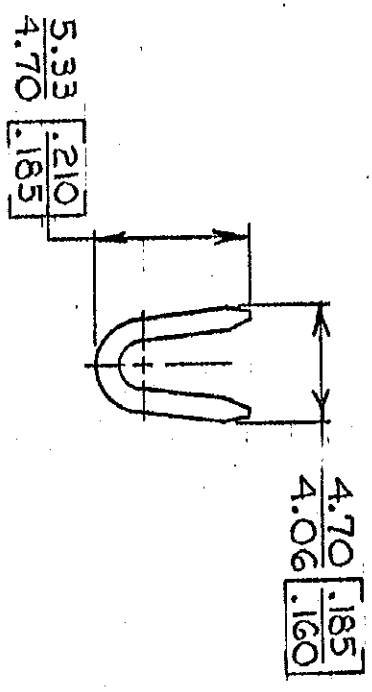
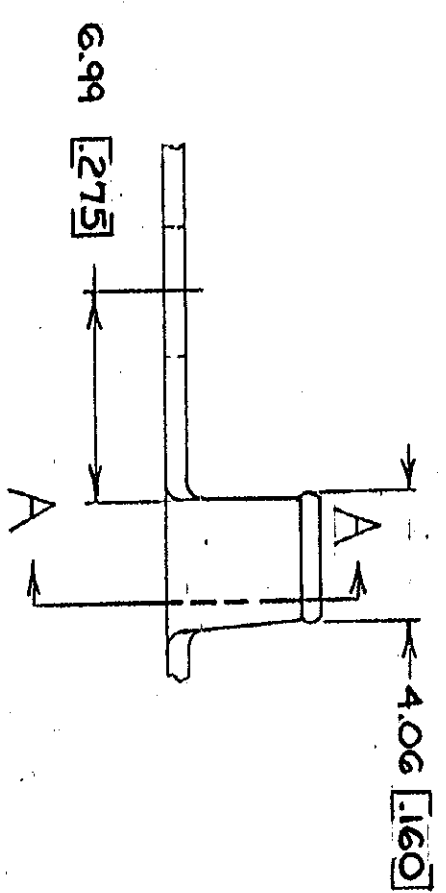
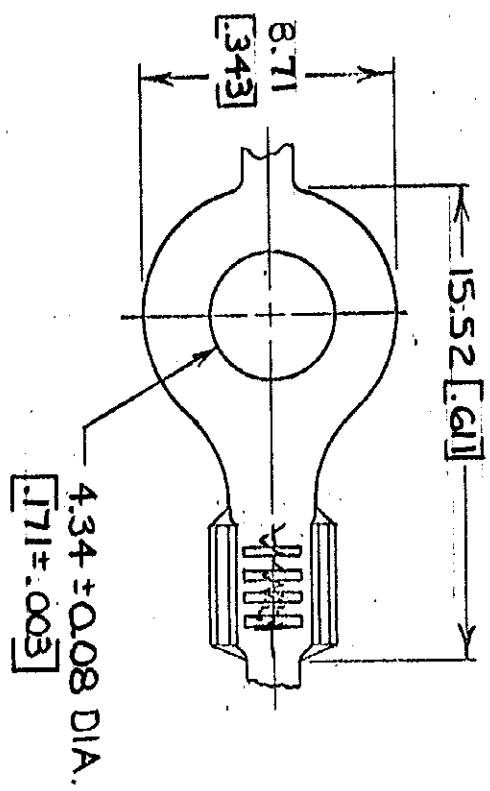


© COPYRIGHT 1975 BY AMP INCORPORATED, HARRISBURG, PA.
 ALL INTERNATIONAL RIGHTS RESERVED. AMP INCORPORATED PRODUCTS
 COVERED BY U. S. AND FOREIGN PATENTS AND/OR PATENTS PENDING.



SECT A-A

- 1. CONTINUOUS STRIP, ON REELS.
- 2. DIMENSIONS IN BRACKETS ARE IN INCHES.

METRIC

REVISIONS		DATE	APPROVED
1	REDRAWN & REVISED A-3943	9/26/78	[Signature]
2	REV PER AF-6785	9/29/78	[Signature]

UNLESS OTHERWISE SPECIFIED DIMENSIONS ARE IN MILLIMETERS. TOLERANCES ON: DECIMALS ±0.05 ANGLES 1°		CONTRACT NO.		FINISH	
M4 #8	0.8-2.0mm ² [8-14]	TIN	0.76 [030]	BRASS	40517
MATERIAL		FINISH		PART NO	
SEE TABLE		SEE TABLE		MATERIAL	
SEE TABLE		SEE TABLE		PART NO	
SEE TABLE		SEE TABLE		PART NO	



RING

SIZE B CODE IDENT NO 00779 DRAWING NO 40517